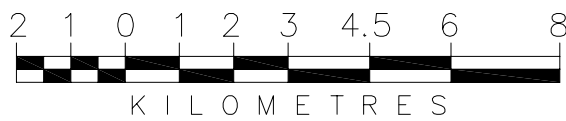


RURAL MUNICIPALITY OF BIG ARM No. 251 OFFICIAL COMMUNITY PLAN

2010



THIS IS THE OFFICIAL COMMUNITY PLAN REFERRED TO IN
BYLAW NUMBER _____ ADOPTED BY THE
RURAL MUNICIPALITY OF BIG ARM No. 251

REEVE

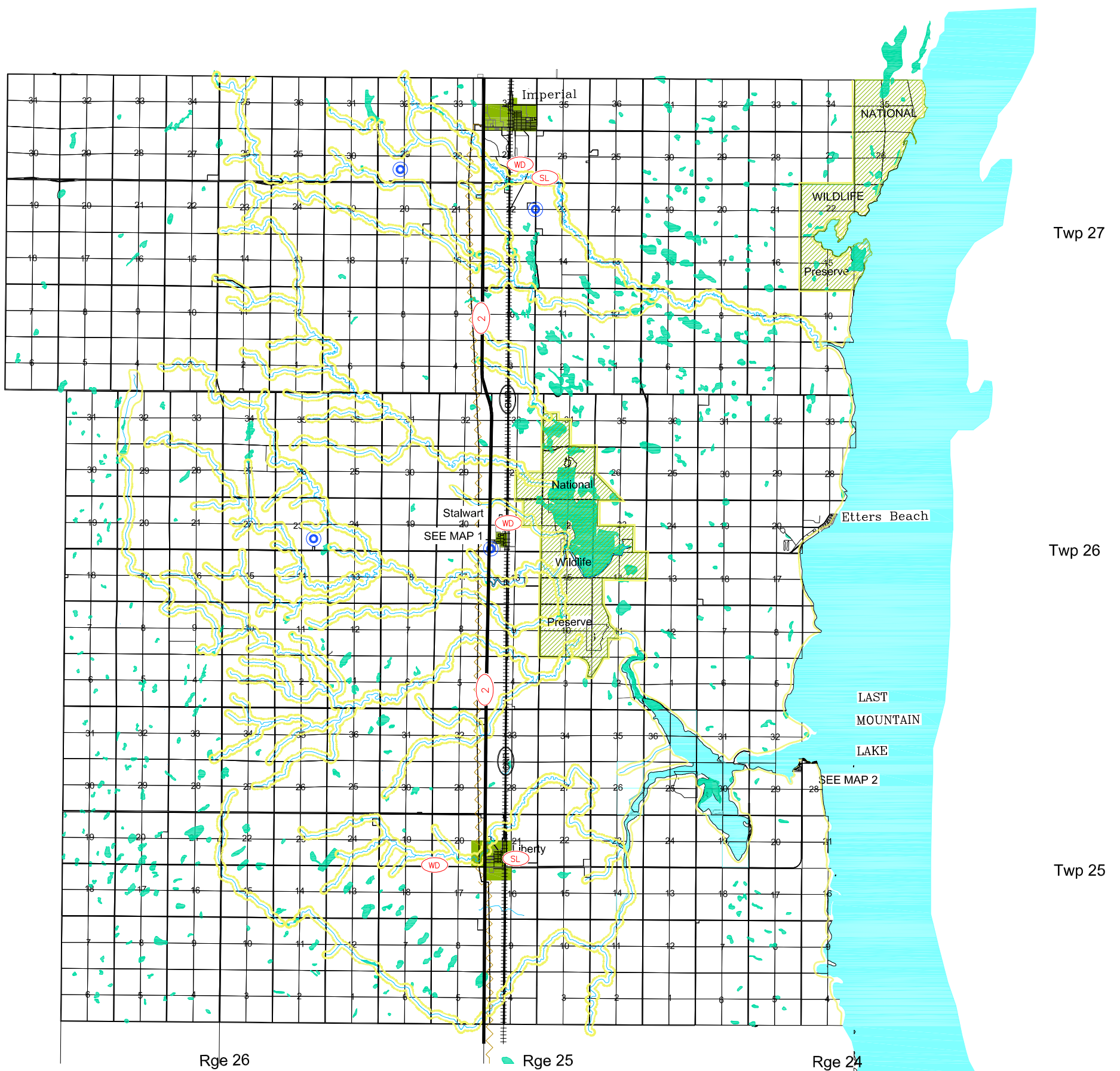
ADMINISTRATOR

APPROVED ON THE _____ DAY OF _____, 2010.

MINISTER OF MUNICIPAL AFFAIRS

LEGEND

- Railroads
- Provincial Highway
- Oil or Gas Pipeline
- Urban Area
- Environmentally Sensitive Overlay
- Public Well
- Waste Disposal
- Sewage Lagoon



NOTE:

This map has been produced by Professional Community Planning Services Ltd. using information supplied by others. Geospatial data and topographic data (Copyright Her Majesty the Queen in Right of Canada) have been provided by Information Services Corporation of Saskatchewan, and/or Saskatchewan Dept. Of Highways for the production of this map under license to the municipality. It is the responsibility of the user to verify the accuracy of the information since changes in assessment, ownership and other information may have changed since the time of printing.

**Professional Community
Planning Services Ltd.**

